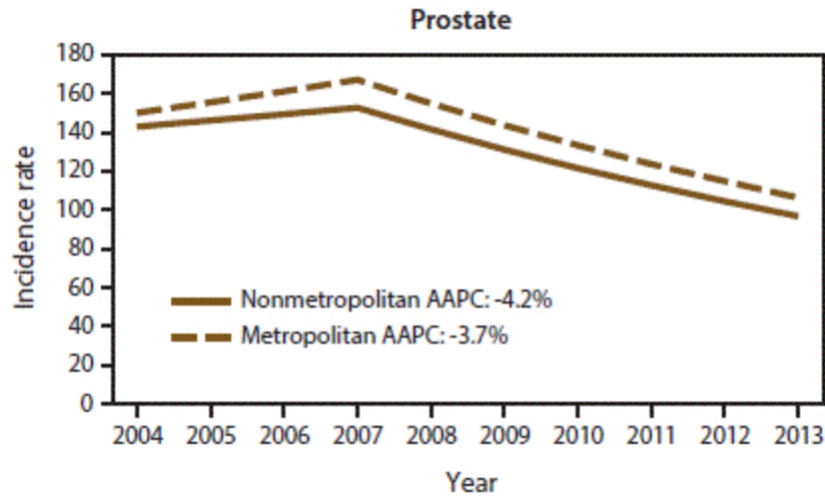
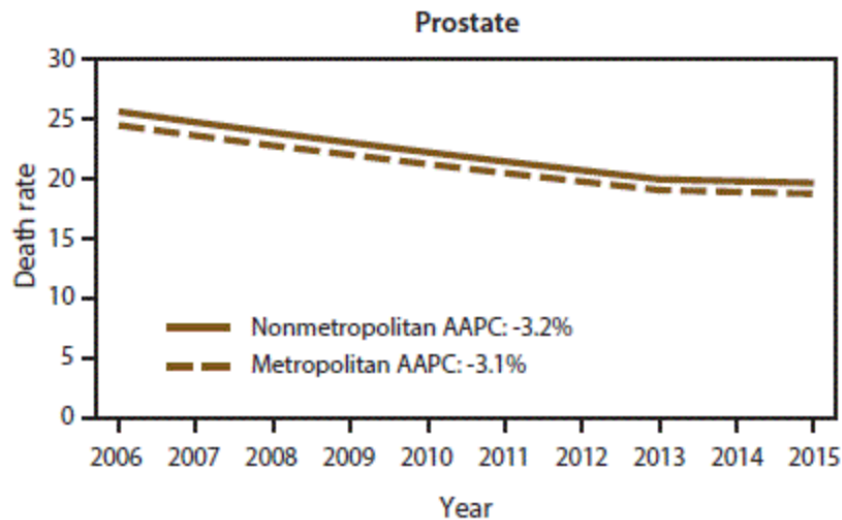


# Cancer Disparities – Prostate Cancer

Trends in annual age-adjusted incidence rates among persons of all ages for common cancers in nonmetropolitan and metropolitan counties, by year of diagnosis — United States, 2004–2013 (CDC)



Trends in annual age-adjusted death rates among persons of all ages for common cancers in nonmetropolitan and metropolitan counties, by year of death — United States, 2006–2015 (CDC)

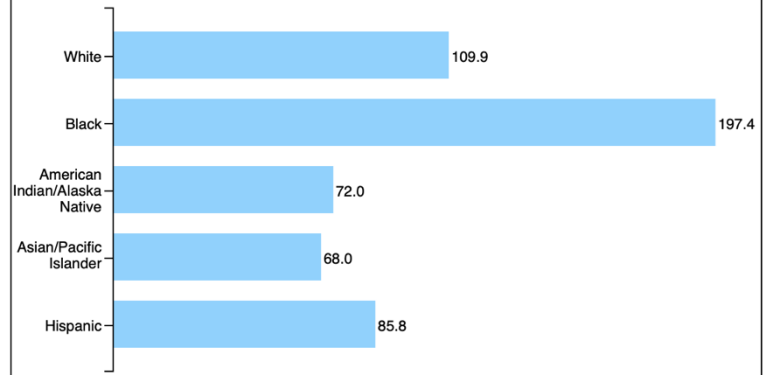


## Rate of New Cancers by Sex and Race/Ethnicity

Prostate  
Rate per 100,000 men

Chart Table Export

Male



## Cancer burden: Nebraska

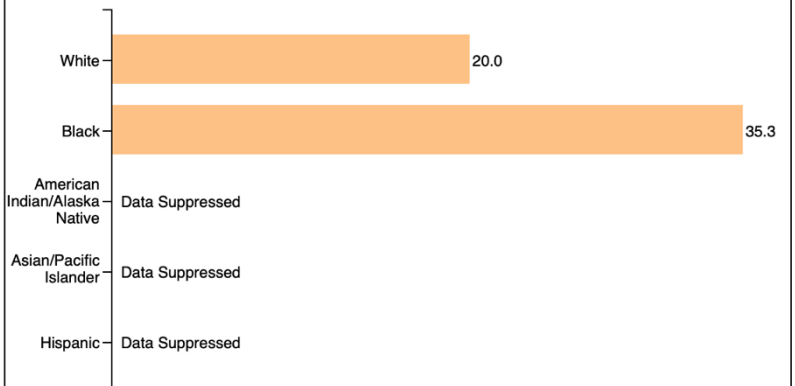
### Prostate, 2011-2015

## Rate of Cancer Deaths by Sex and Race/Ethnicity

Prostate  
Rate per 100,000 men

Chart Table Export

Male

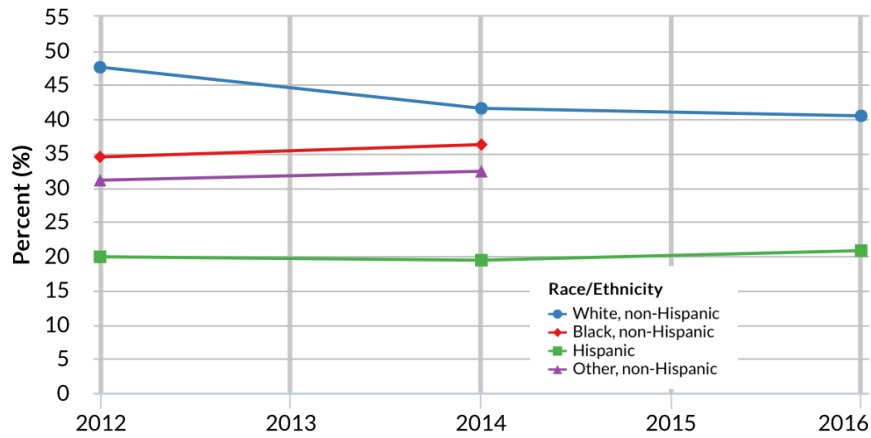


Nebraska - All available years

Men aged 40+ who have had a PSA test within the past two years (variable calculated from one or more BRFSS questions) (Crude Prevalence)

View by: Race/Ethnicity

Response: Yes

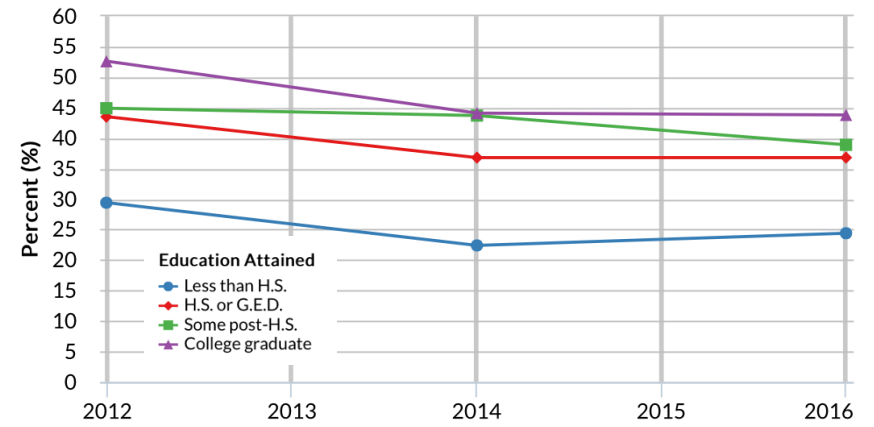


Nebraska - All available years

Men aged 40+ who have had a PSA test within the past two years (variable calculated from one or more BRFSS questions) (Crude Prevalence)

View by: Education Attained

Response: Yes

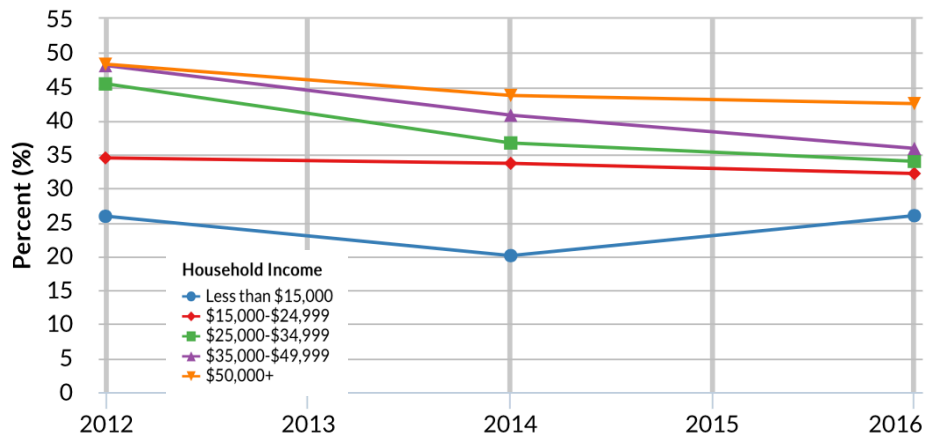


Nebraska - All available years

Men aged 40+ who have had a PSA test within the past two years (variable calculated from one or more BRFSS questions) (Crude Prevalence)

View by: Household Income

Response: Yes



Nebraska - All available years

Men aged 40+ who have had a PSA test within the past two years (variable calculated from one or more BRFSS questions) (Crude Prevalence)

View by: Age Group

Response: Yes

