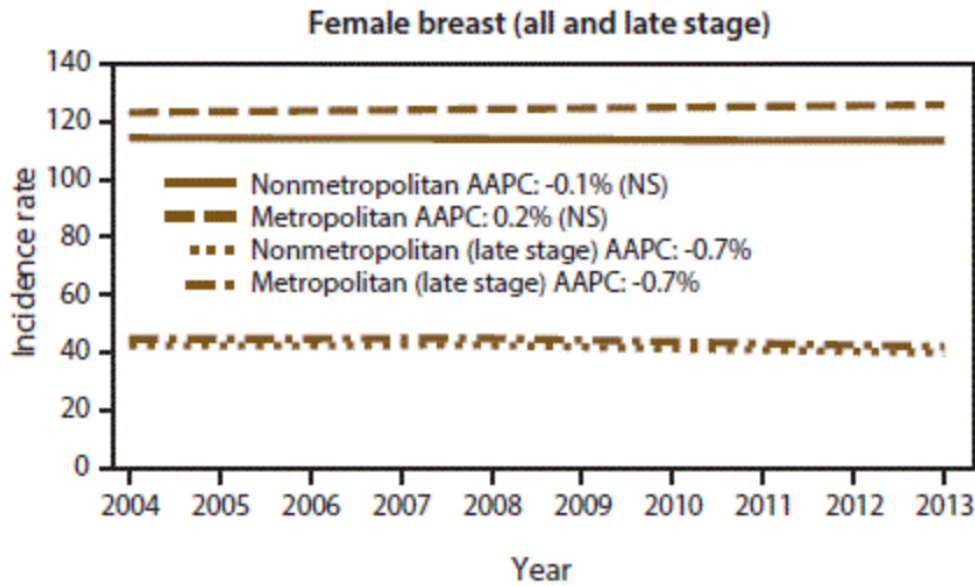
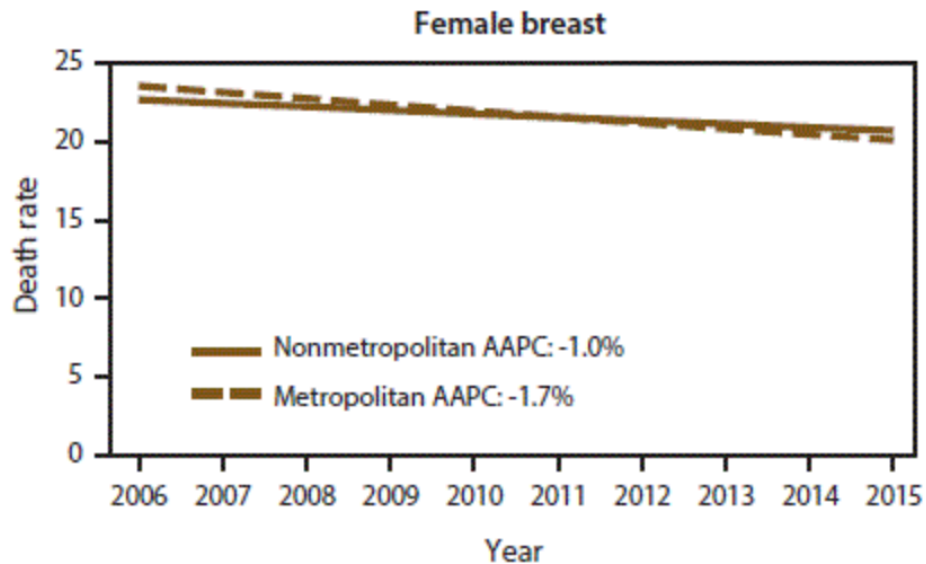


Cancer Disparities – Breast Cancer

Trends in annual age-adjusted incidence rates among persons of all ages for common cancers in nonmetropolitan and metropolitan counties, by year of diagnosis — United States, 2004–2013 (CDC)



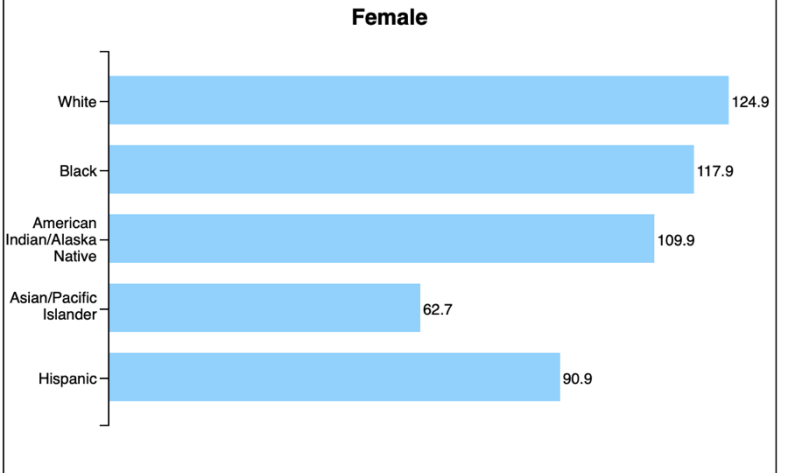
Trends in annual age-adjusted death rates among persons of all ages for common cancers in nonmetropolitan and metropolitan counties, by year of death — United States, 2006–2015 (CDC)



Rate of New Cancers by Sex and Race/Ethnicity

Female Breast
Rate per 100,000 women

Chart Table Export



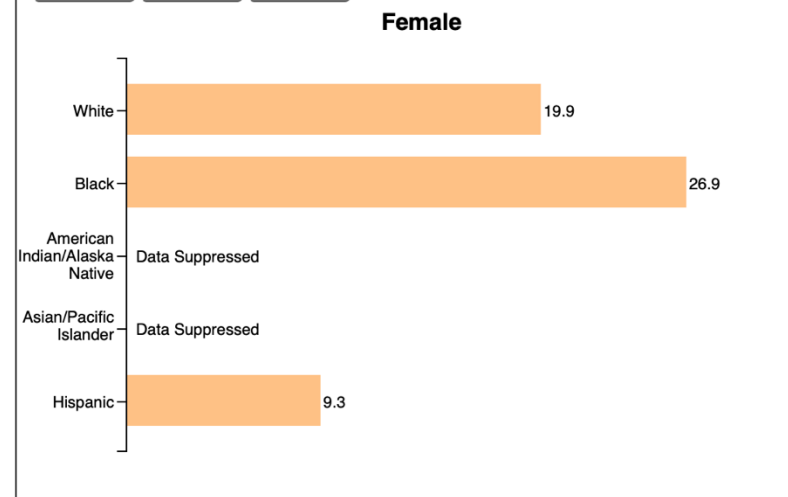
Cancer burden: Nebraska

Female Breast, 2011-2015

Rate of Cancer Deaths by Sex and Race/Ethnicity

Female Breast
Rate per 100,000 women

Chart Table Export



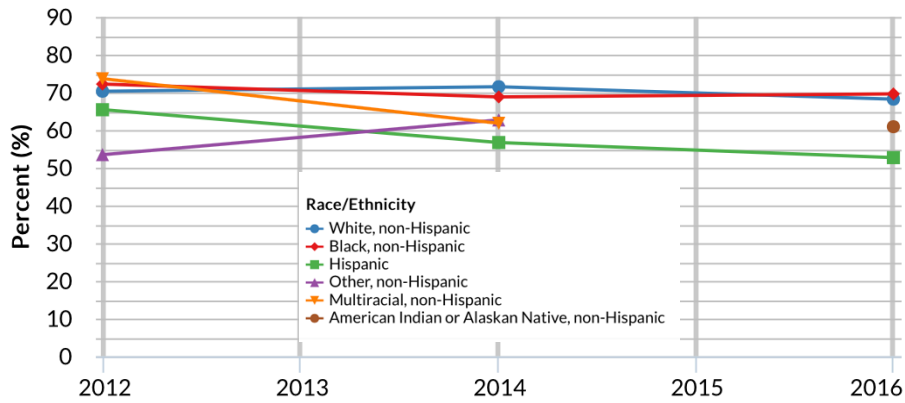
Source: United States Cancer Statistics, Data Visualizations

Nebraska - All available years

Women aged 40+ who have had a mammogram within the past two years
(variable calculated from one or more BRFSS questions) (Crude Prevalence)

View by: Race/Ethnicity

Response: Yes

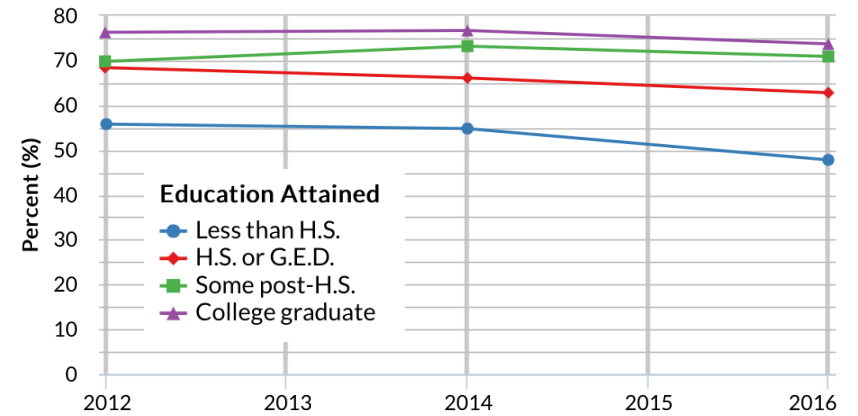


Nebraska - All available years

Women aged 40+ who have had a mammogram within the past two years
(variable calculated from one or more BRFSS questions) (Crude Prevalence)

View by: Education Attained

Response: Yes

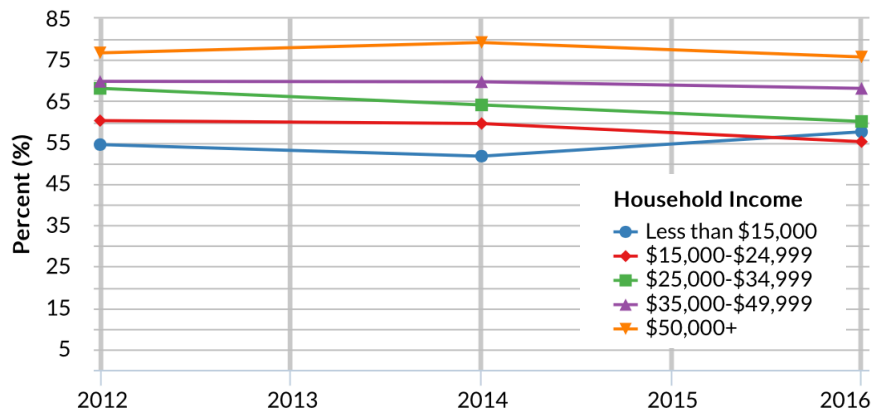


Nebraska - All available years

Women aged 40+ who have had a mammogram within the past two years
(variable calculated from one or more BRFSS questions) (Crude Prevalence)

View by: Household Income

Response: Yes



Nebraska - All available years

Women aged 40+ who have had a mammogram within the past two years
(variable calculated from one or more BRFSS questions) (Crude Prevalence)

View by: Age Group

Response: Yes

